

# Ringwould with Kingsdown Neighbourhood Plan



Ringwould with Kingsdown  
Parish Council

Alison Eardley • Consulting  
[www.YourFriendlyPlanner.co.uk](http://www.YourFriendlyPlanner.co.uk)

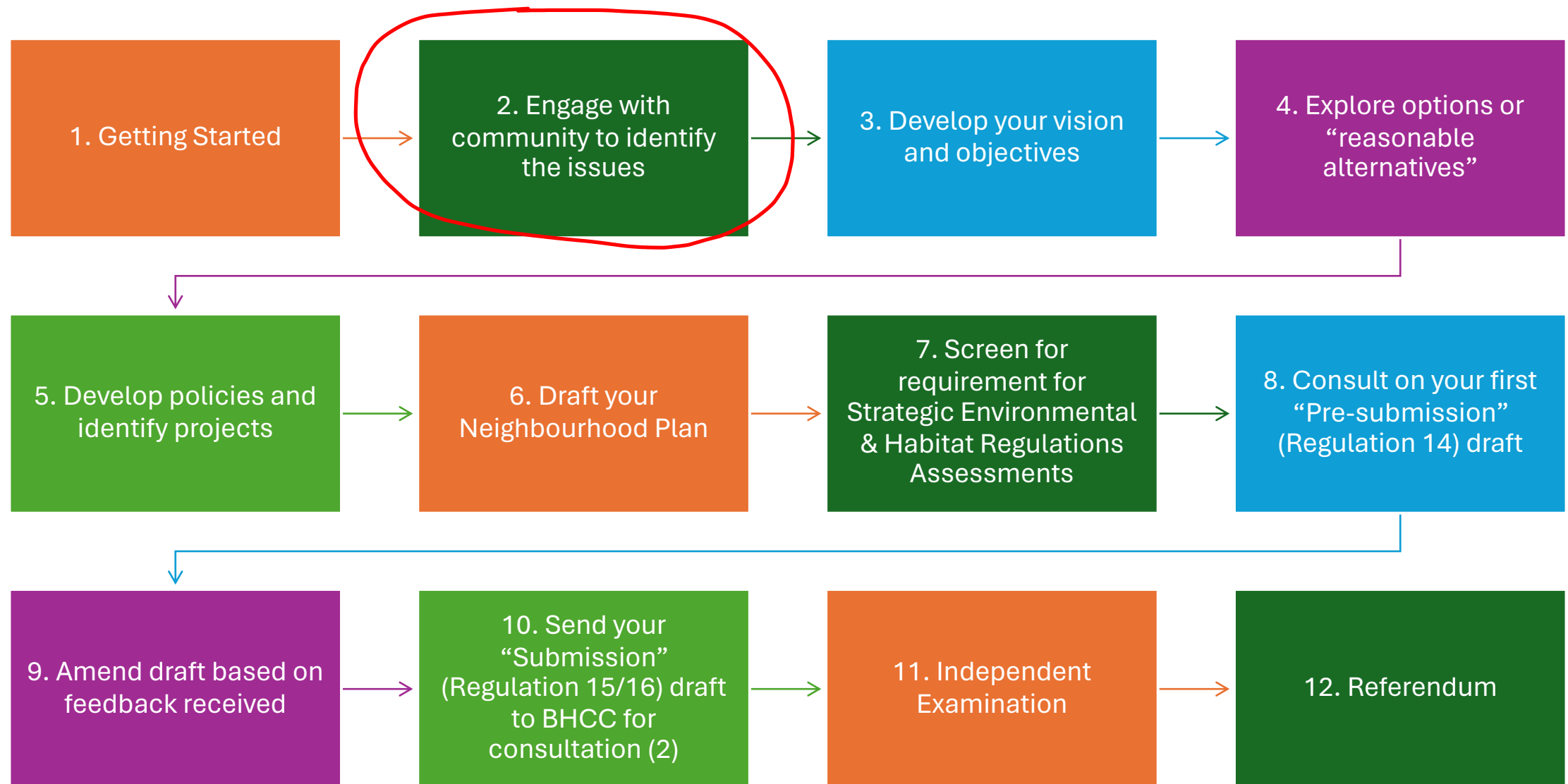


# Programme for this evening

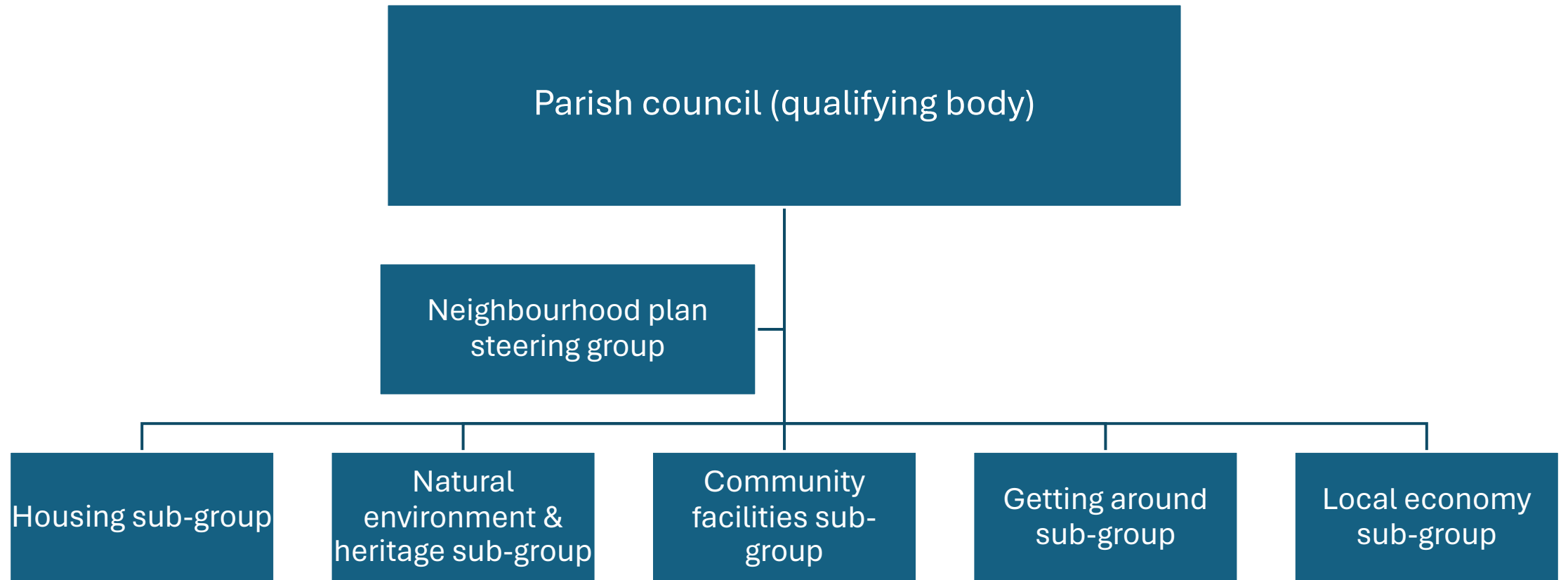
## **First Steering group agenda**

1. Welcome and introductions including tonight's agenda
2. Update on the NP – last two events, looking forward
3. Role of steering group
4. Roles on the steering group
5. Appointing members
6. Appointing to key roles – chair, vice-chair, secretary, publicity officer
7. Household survey
8. AOB

# Key steps in a neighbourhood plan



# Neighbourhood plan structure



# SWOT analysis – Community Facilities

Strengths	Weaknesses
Village halls	Inadequate village halls
Play parks	Village hall parking
Schools	Poor bus service
Post office	No nursery / playgroup
Allotments (Ringwould) x2	Insular holiday park
Beach huts	bus frequency
Boat park	Bus services inadequate
Golf club	Non-viable parish hall
Playing fields	Both village halls - terrible parking
Bus routes	KVH - not suitable for elderly / disabled users
Public toilet	Ringwould - no shops
Pubs in Kingsdown and half a one in Ringwould	Ringwould - pub not well used
Post office / micro shop	No footpaths Kingsdown - Ringwould
Butcher	Poor bus service
3 viable pubs	Parking
Post office, general store	Lost the village hall nursery
Butchers / deli	
St John's Church is used as community services (church full)	
Village halls - both have good cooking facilities	
2 lovely churches - good size - can have large meetings there	
Protected beach SSSI - shingle replenished by DDC	
Ringwould allotments - lovely location	
Community garden	
Kingsdown - lots of vibrant pubs	
Zetland on beach - iconic	
Kingsdown - well provided with shops	
Kingsdown public toilets	

# SWOT analysis – Community Facilities

Opportunities	Threats
Rifle range	Publiet toilet
Village Hall (Kingsdown) at new development	Funding
Is the pub a hub - should it be a business hub?	Lots of holiday makers - no revenue
Village hall in dip	Unsolved traffic problems
Want allotments in Kingsdown	Could ruin everything
60 new houses to provide us with a superior village hall with parking and wheelchair access	Business and private parking at critical level
Village section 106 for 60 houses = village hall	May lose pub in Ringwould
Yes to camper vans but where we want them.	Public toilets - funding - issue may lose
Shop could give greater offering	
Co-operative shop, holiday homes and mini-farm	
Empty old Post Office	
Could be coffee shop, community run	
Sweet shop	
Section 106 new parish hall funds	
Allotments Kingsdown of modest size	
Kingsdowns allotments?	
Modern almshouses - like rural exception sites only for locals	
New village hall in Kingsdown	
Need a nursery in the parish - could there be one at the primary school?	

# SWOT analysis – Local Economy

Strengths	Weaknesses
Working from home	Seasonal economy
Kingsdown Water	Air BNB
4 x pubs	Second homes
3 x shops	Quiet in winter
Campsite	No café
Holiday park	No shop in Ringwould
Air BNBs / holiday homes	Current businesses (pubs and shop) barely viable and kept going by owner's commitment - be careful to avoid revenue extraction
Kingsdown riding school / centre	Lack of parking for traffic (for visitors)
Dairy Farm	Lack of shops
Stables	Lack of post office
Golf club (open to non-members) x 3	Parking
Cyclig and walking routes	Traffic
Care home	Beach traffic
Kingsdown Breads	Beach parking
Village School	Overnight camping
Seasonal economy	Limited employment opportunities
Repeat visitors - much loved destination	Too many Air BNBs / second homes
Advantages of local retail outlets rather than travel into town	Westfield Nursery - lots of other buildings there / units. Poor access for lorries.
Natural environment	Ringwould - lack of facilities. Need for retail outlet. Keep pub!
Cliffs	Retain post office, village shops in Kingsdown.
Beach x3	Kingsdown Village Hall - access inside not disabled friendly. No parking.
Countryside	Ringwould village hall - access limited, otherwise excellent.
Village centre shops and pubs	Kingsdown Village Hall is no longer suitable
Holiday camp	Village halls - poor access, limited parking
Campsite	
Farms and farming	
Butchers well used	
Westfield Nursery - grow tomatoes	
Village halls	
Churches x 2	
Play park	

# SWOT analysis – Local Economy

Opportunities	Threats
Rifle range opportunity for ecological, visitor, scientific business	Ageing population (need replenishment)
Campsite and holiday camp has own shop and bar - encourage people to use village shops	High prices deter young people
St Nicholas St John's Village Halls	More second homes and Air BNBs
Motorcross bike park near Woodhill Farm	Protect Post Office
Making more of 52 week year round economy	Protect pubs
Seasports	Gentrification of family friendly pubs
Currents and launch slipway	2nd homes - loss of school / reduced population
Long-term a new central parish hall on Ringwould Hall site but only after safe, dry, all weather access from Kingsdown	Agricultural land reduction
Develop equestrian pursuits	Lack of parking - threat to pubs, shops
Develop rural pursuits	2nd homes
Rifle range development of	Five Bells pub may close. Not doing very well. May turn into accomodation [residential] lose jobs
Sea swimmers	
Swimmers' sauna on beach	
Park parking / car parks	
Cyclists / café	
Old post office - café	
Beach huts	
Business survey - homeworking, internet, facilities needed, support network	
Old post office - reinstate	
Future proof shops	
Del's store and post office - need to keep going	
Farm dairy - other small businesses working from here? Are they expanding?	
Could do with part-time shop / post office maybe within pub (Ringwould), outbuildings or mobil shop. Use rural opportunities fund. Survey to see if demand. Veg from Walmer Farm Shop.	
Ringwould Post Office?	



# Steering group

## **Objectives**

The purpose of the NPG is:

1. To prepare a Neighbourhood plan for the civil Parish of Ringwould with Kingsdown;
2. To promote or improve the social, economic and environmental well-being of the Parish.

## **Purpose (extract):**

10. Identify ways of involving the whole community and gather the views and opinions of as many groups and organisations in the community as possible;
11. Determine the types of survey and information gathering to be used;
12. Be responsible for the analysis of the survey and the production and distribution of a report/s;
13. Develop a draft Neighbourhood plan including a vision, objectives (principles), policies and projects based on robust quantitative and qualitative evidence;
14. To consult on the draft Neighbourhood plan and provide a report of comments received and action taken in response to them;

# Steering group

## **Membership**

17. The NPG Steering Committee will consist of up to 15 members who live or work in the parish;
18. Membership shall be drawn from the different parts of the parish and different sections of the community;
19. Not less than two of these members will be members of the Parish Council;
20. A person shall cease to be a member of the NPG having notified the chair or secretary in writing of his or her wish to resign.

## **Officers**

21. At the first meeting of the NPG the Steering Committee it will elect:
  - a chair,
  - vice-chair,
  - a secretary and
  - a publicity officer.
  - The Clerk to Ringwould with Kingsdown Parish Council will fulfil the role of Treasurer.

# Household survey / questionnaire

A good questionnaire encourages people to share information so it needs to be attractive and easy to complete.

- Make the questions easy for everyone to understand. People may have difficulty reading for all sorts of reasons including eyesight problems, lack of reading skills etc.
- Avoid jargon, keep it simple and direct
- Be relevant and specific about what you are asking
- Put the questions in a logical order by grouping questions about similar subjects together
- Make sure the questionnaire is written in a big enough font using something like 'Arial' because many people have sight problems
- Take time to make the questionnaire look attractive. On the printed copy, break the questions up into sections and perhaps put in a few pictures
- When using colours, be careful not to have busy or dark backgrounds behind the text, people may struggle to read it.

# Household survey / questionnaire

Ask yourself “so what?”

In order to decide which questions you want to keep in your questionnaire it may be useful to use the ‘so what?’ test – a question may be interesting but will you be able to use the information to inform any decisions or take any action?

Example - questions about drivers and numbers of cars in a household may be interesting to ask but what you can do with the information gleaned? Would it be better to save the space for something else?

- What will help you find out more about the issues?
- What will help to move things forward?
- Be realistic, some things are not possible or are simply not in your control
- “Wish lists” may raise expectation but may not be deliverable.

Analysis

Also think about how you are going to analyse the results so as not to give yourself an impossible task. Avoid having lots of open comments, because they are difficult to analyse.

# Next steps

In discussion with the parish council, the short-term priorities will be:

1. Formalising the steering group – proposed on evening of 15<sup>th</sup> May
2. Housing Needs Assessment – first draft due 22<sup>nd</sup> May (AECOM consultants)
3. Design Guidance and Codes – first draft due soon (AECOM consultants)
4. Evidence gathering – Local Green Spaces and Views – working / sub-groups
5. Evidence gathering – Views – working / sub-groups
6. Develop and deliver household survey – May and June – steering group
7. Vision and objectives event – July – public event